

DATASHEET

Type: **BONBORI WALL**
Name: Wall light
ID: PC1251
Designed by: Fumie Shibata Desing SS company



Download

Description

The gentle light of Bonbori pays tribute to a traditional Japanese lantern. Its skilfully crafted handblown glass and soft luminescence create a magical and festive ambience to be enjoyed as thoroughly in solitude as with family and friends. The new indoor light features special connectors developed by Brokis that make it easy to unplug and move outside to a covered exterior space, for instance.



Tech. description

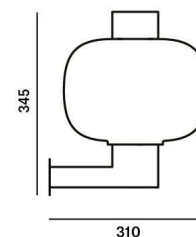
The new Bonbori Wall lights meet the IP44 rating for outdoor lighting. The simple stainless-steel body is finished in an environmentally friendly weather-resistant powder coating. The easily removable LED light source, which can withstand below-freezing temperatures, casts a gentle glow through a diffusor and laser-cut openings in the stainless steel.

Colours options: https://brokis.sharepoint.com/:b:/s/brokis_sp/EbLeiBYqflHs5OKp6n8PJQBKW7wUGHQDKEwD2MbJyMkfQ

CONSTRUCTION SPECIFICATION

Weight: 4 kg
Construction material: glass, metal
Cord length [mm]: -
Mounting: Wall
Environment: Indoor/Outdoor

DIMENSIONS [mm]



ELECTRICAL SPECIFICATION

Input voltage [V]: 230 V
Frequency [Hz]: 50-60 Hz
Max. power [W]: 60 W
Coverage IP: 20
Socket: E27
Light source: -
Energy class: depending on light source

CERTIFICATIONS



BROKIS S.R.O.
ŠPANILOVA 1315/25
163 00 PRAHA 6 - ŘEPY
CZECH REPUBLIC

ORG ID 64940799
VAT ID CZ64940799
C 42174 MĚSTSKÝ SOUD
V PRAZE

TEL +420 567 211 517
TECHNICAL@BROKIS.CZ
INFO@BROKIS.CZ
WWW.BROKIS.CZ

2022_01
PAGE 1

DATASHEET

RECOMMENDED BULBS



Download



CM8790

Socket	E27
Type	LED filament
Lamp wattage [W]	11 W
Input voltage [V]	220 - 240 VAC
Energy class	E
Flux [lm]	1250 lm
Light colour [K]	2700 K
CRI	90
Lifespan [h]	20000h
Dimmable	yes
Dimensions h x w [mm]	175 x 32 mm



BROKIS®

BROKIS S.R.O.
ŠPANILOVA 1315/25
163 00 PRAHA 6 - ŘEPY
CZECH REPUBLIC

ORG ID 64940799
VAT ID CZ64940799
C 42174 MĚSTSKÝ SOUD
V PRAZE

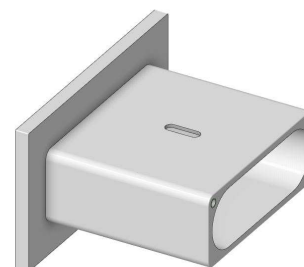
TEL +420 567 211 517
TECHNICAL@BROKIS.CZ
INFO@BROKIS.CZ
WWW.BROKIS.CZ

2022_01
PAGE 2



INNER FIXTURE

Dimensions l x h [mm] 110 x 63 mm
Weight [kg] 0,1 kg
Material dural



Drawing

Hole placement

