



Description

The collection is a showcase of original design and refined combinations of materials, such as glass, metal, and leather. It features a tubular LED light source with a range of colour temperatures to choose from.



Tech. description

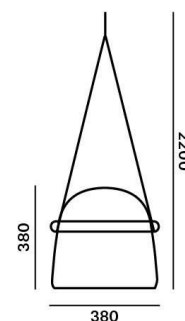
The light comprises a glass shade, leather suspension straps, and tubular LED module with triplex opal glass diffuser. The LED module uses a Brokis connector. The entire assembly is secured with dural endcaps. The light is hung from a ceiling canopy, which also houses the electronics and terminal connectors.

Colours options: https://brokis.sharepoint.com/:b:/s/brokis_sp/EUqV7Kr4cz5GgXawHGoY5W8Bd-3Ea4jMhVdnYqT2xN9k-

CONSTRUCTION SPECIFICATION

Weight:	9 kg
Construction material:	glass, metal, leather
Cord length [mm]:	2,200 mm
Mounting:	Ceiling
Environment:	Indoor

DIMENSIONS [mm]



ELECTRICAL SPECIFICATION

Input voltage [V]:	100 - 240 V
Frequency [Hz]:	50-60 Hz
Max. power [W]:	8 W
Coverage IP:	20
Socket:	non-user replaceable LED module
Light source:	-
Energy class:	A+

CERTIFICATIONS





CP10295

Type	LED module
Lamp wattage [W]	8 W
Input voltage [V]	24 VDC
Energy class	A+
Flux [lm]	580 lm
Light colour [K]	2700 K
CRI	80+
Lifespan [h]	20000h
Dimmable	yes (PWM)



DATASHEET

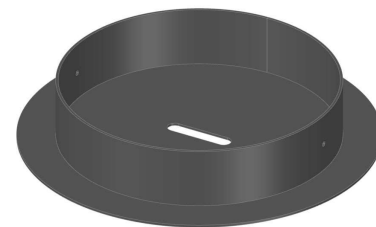
RECOMENDED CANOPY



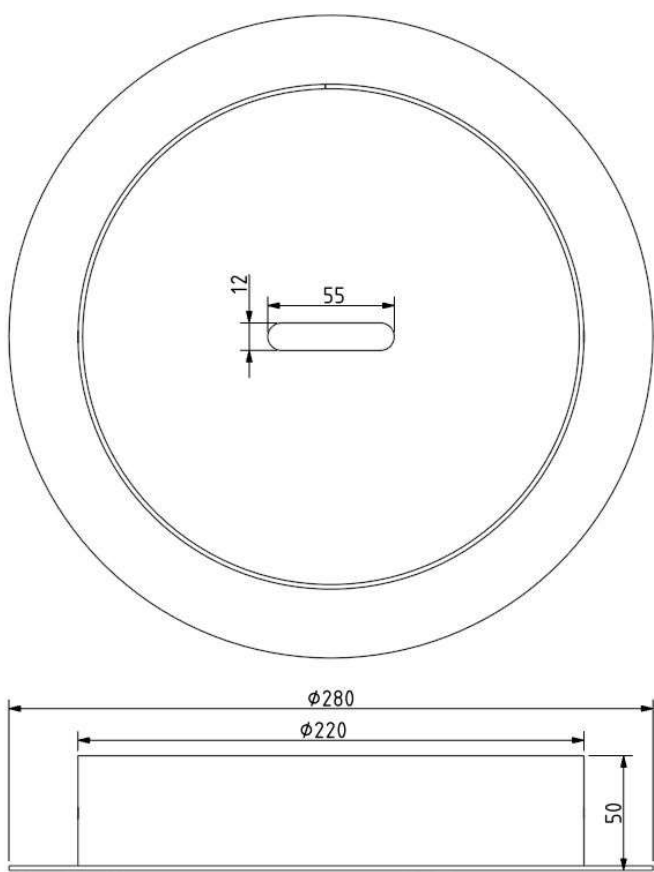
Download

CEILING CANOPY

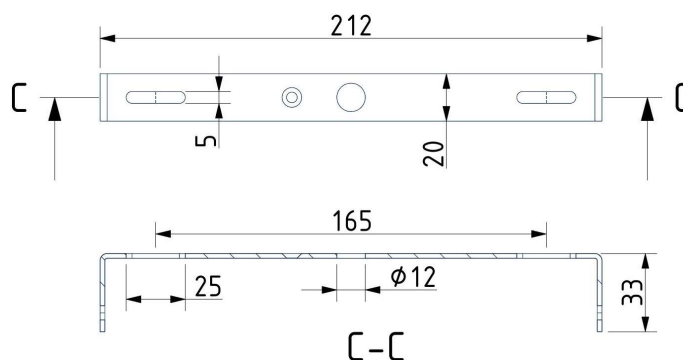
Dimensions O x w [mm]	280 x 50 mm
Weight [kg]	1.6 kg
Material	metal



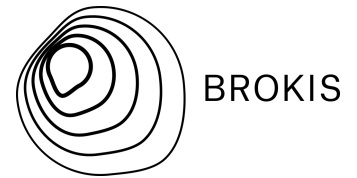
Drawing



Canopy bracket



PRODUCT LIST



BROKIS

Name MONA LARGE PENDENT

Type pendent lamp

ID PC938



Description The Mona collection is based on the concept of penetrating forms. The light source boldly traverses the ample volume of smooth handblown glass to reveal the thrilling tension inherent in the design. The collection's essence, however, lies in its unconventional construction and refined combination of materials. It also boasts dimmable tubular LED light sources, developed by Brokis, each with a different colour temperature. The Mona Large collection includes floor and suspension lights of larger proportions than the other Mona collections.

Technical description Combined craftsmanship / hand-blown glass in combination with oak and metal body. The craftsmanship applied in production follows in the centuries-old tradition and experience of master glassmakers. The precision crafting of hand-blown glass instills distinctive, enduring character and outstanding quality in all Brokis products. The glass shades are formed from multiple layers of molten glass, each of which is scrutinized by the master glassmaker prior to being blown into the mold. Up to 70% of the resulting quality is achieved in this stage of production.

Glass Colour

transparent glass	A	CGC23
smoke grey - transparent glass	A	CGC516
opaline - transparent glass	A	CGC38
black - transparent glass	A	CGC602
violet - transparent glass	A	CGC554

Glass surface

glossy surface	ALL	CGSU66
----------------	-----	--------

Body finish

silver anodized	A	CCS1917
black anodized	A	CCS1948
iron - white matte powder coating	A	CCS845

Canopy finish

iron - black matte powder coating	A	CCSC619
iron - white matte powder coating	A	CCSC618

Straps

leather straps - black	A	GINT792
leather straps - natural	A	GINT788
leather straps - grey	A	GINT758
leather straps - dark brown	A	GINT793

Connection method

BROKIS connector	A	CCM1019
------------------	---	---------

LED Source

24V, LED, 8W, 2700K, 470lm, RA80+, DIM	A	LEDS1992
24V, LED, 8W, 4000K, 577lm, RA80+, DIM	A	LEDS1993
24V, LED, 8W, 5000K, 610lm, RA80+, DIM	A	LEDS1994

Dimmable version

non-dimmable version	A	CEDV1457
RF system - remote control version	A	CEDV1461
PWM signal	A	CEDV1459
1-10V	A	CEDV1460
DALI version	A	CEDV1458
AC phase-cut	A	CEDV1730