

DATASHEET

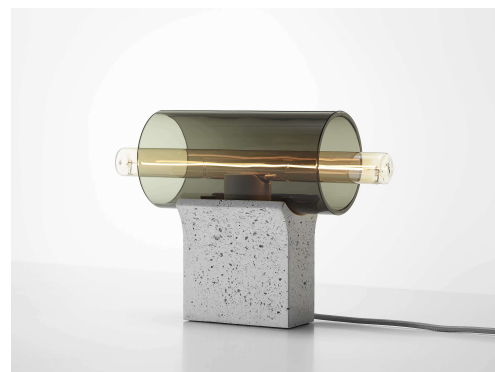
Type: **OVERLAY**
Name: Table light, Floor light
ID: PC1299
Designed by: Lucie Koldová



Download

Description

Modern yet timeless. Extravagant in its style and use of clean geometric forms. Inspired by architecture. The Overlay collection arose from a synthesis of various materials on mood boards during a creative process that involved seeking ideas and associations between art and design, overlaying different textures, and playing with volumes. The blown transparent glass tubes instil the Overlay collection with a distinctive character, as does the unique concrete fixture embedded with shards of upcycled glass from Janštejn Glassworks.



Tech. description

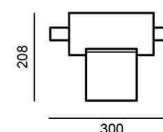
The light comprises a glass tube, a concrete fixture with an S14d socket, and a power cable with dimmer. The concrete elements contain a high proportion of glass shards from Janštejn Glassworks.

Colours options: https://brokis.sharepoint.com/:b:/s/brokis_sp/EXGluOexKKBLiWUA2QT8n3kBltdhCchIG4AtBq3ag_pXZw

CONSTRUCTION SPECIFICATION

Weight: 2 kg
Construction material: glass, metal, concrete
Cord length [mm]: 2,000 mm
Mounting: Table
Environment: Indoor

DIMENSIONS [mm]



ELECTRICAL SPECIFICATION

Input voltage [V]: 230 V
Frequency [Hz]: 50-60 Hz
Max. power [W]: 10 W
Coverage IP: 20
Socket: S14d
Light source: -
Energy class: A+ to E depending on light source

CERTIFICATIONS



BROKIS S.R.O.
ŠPANILOVA 1315/25
163 00 PRAHA 6 - ŘEPY
CZECH REPUBLIC

ORG ID 64940799
VAT ID CZ64940799
C 42174 MĚSTSKÝ SOUD
V PRAZE

TEL +420 567 211 517
TECHNICAL@BROKIS.CZ
INFO@BROKIS.CZ
WWW.BROKIS.CZ

2022_10
PAGE 1

DATASHEET

RECOMMENDED BULBS



Download



CM15709

Socket	S14d
Type	LED
Lamp wattage [W]	6.2 W
Input voltage [V]	230 VAC
Energy class	G
Flux [lm]	460 lm
Light colour [K]	2700 K
CRI	90
Lifespan [h]	20000h
Dimmable	yes
Dimensions □ x h [mm]	30 x 300 mm



BROKIS®

BROKIS S.R.O.
ŠPANILOVA 1315/25
163 00 PRAHA 6 - ŘEPY
CZECH REPUBLIC

ORG ID 64940799
VAT ID CZ64940799
C 42174 MĚSTSKÝ SOUD
V PRAZE

TEL +420 567 211 517
TECHNICAL@BROKIS.CZ
INFO@BROKIS.CZ
WWW.BROKIS.CZ

2022_10
PAGE 2

PRODUCT INFORMATION SHEET



Name OVERLAY TABLE S

Type table lamp

ID PC1299



Description

Modern yet timeless. Extravagant in its style and use of clean geometric forms. Inspired by architecture. The Overlay collection arose from a synthesis of various materials on mood boards during a creative process that involved seeking ideas and associations between art and design, overlaying different textures, and playing with volumes. The blown transparent glass tubes instill the Overlay collection with a distinctive character, as does the unique concrete fixture embedded with shards of upcycled glass from Janštejn Glassworks. The piece is cast in different rectangular volumes specifically for each type of light capable of accommodating both simple and multiple assemblies for a remarkable degree of versatility. Cradled within the concrete fixture is a delicate sleeve of either frosted or clear glass, its centreline struck by a light tube that seemingly levitates within. The typology of the Overlay collection comprises horizontal pendant variants, table lights, and wall lights that open the door to a new realm of possibilities in lighting art. The collection has now been expanded with other variants.

Technical description

The Overlay collection is made with three different types of glass: the light tube is crafted from handblown glass; the concrete base is embedded with 3-4 mm glass shards for an attractive aesthetic element; and crushed glass is used in place of sand as the primary binder in the concrete base. The transformation of waste shards into new decorative products constitutes an ecofriendly and efficient upcycling of glass, thanks to which Janštejn Glassworks is able to pursue a successful circular economy strategy and thus contribute to the formation of a healthy symbiosis between nature and people. The technologies applied in production follow in the centuries-old tradition and experience of master glassmakers. The precision crafting of handblown glass instills distinctive, enduring character and outstanding quality in all BROKIS products. The glass shades are formed from multiple layers of molten glass, each of which is scrutinized by the master glassmaker prior to being blown into the mould. This phase of production is responsible for up to 70% of the resulting quality of the product. Overlay lights are equipped with special connectors developed by BROKIS for easy maintenance and quick changes to lighting compositions without the need for accessing building wiring or altering other interior features.

Glass Colour

transparent glass	A	CGC23
smoke grey - transparent glass	A	CGC516
amber - transparent glass	A	CGC515

Glass surface

glossy surface	A	CGSU66
acid-etched outside surface	A	CGSU67

Base finish

High-performance concrete with glass fragments – white	A	CSFB2879
High-performance concrete with glass fragments – natural	A	CSFB2880
High-performance concrete with glass fragments – anthracite	A	CSFB2881

Cable colour

textile cable - white	A	CECL521
textile cable - light grey	A	CECL1918
textile cable - dark grey	A	CECL520

Recommended Bulbs

300 mm, 230V, LED, 6.2W, 2700K, 460 lm, RA90, DIM	A	CEB2898
---	---	---------