



## Description

The Planets collection is based on period lights and reflects the daily needs not only of customers but of architects and designers too. Thanks to a simple physical principle, the lights can be variably positioned in diverse arrangements. The use of weights and pulleys makes it possible to quickly adjust the height of the lights, a unique system that allows for several groupings to serve as individual sources of light in an interior, or as multiples of three different (or same) shapes to illuminate larger spaces.



## Tech. description

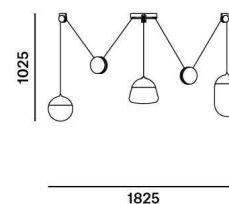
The light is hung from a central metal ceiling canopy, which houses the electronics and anchors the wire ropes integrated into the power cables leading to each light. The individual lights are hung from the ceiling by means of pulleys and balanced with counterweights. The system allows variable vertical positioning of each light independently. Each light comprises a power cable, metal cover, LED module, and a glass shade.

Colours options: [https://brokis.sharepoint.com/:b:/s/brokis\\_sp/EYyy8lzK9w5Dh6rADIG5zSoBpsCb4eOZ-Vn7vbgOa9-IOg](https://brokis.sharepoint.com/:b:/s/brokis_sp/EYyy8lzK9w5Dh6rADIG5zSoBpsCb4eOZ-Vn7vbgOa9-IOg)

## CONSTRUCTION SPECIFICATION

<b>Weight:</b>	30,6 kg
<b>Construction material:</b>	glass, metal
<b>Cord length [mm]:</b>	individual
<b>Mounting:</b>	Ceiling
<b>Environment:</b>	Indoor

## DIMENSIONS [mm]



## ELECTRICAL SPECIFICATION

<b>Input voltage [V]:</b>	110 - 240 V
<b>Frequency [Hz]:</b>	50-60 Hz
<b>Max. power [W]:</b>	37.5 W
<b>Coverage IP:</b>	20
<b>Socket:</b>	-
<b>Light source:</b>	LED module
<b>Energy class:</b>	A+

## CERTIFICATIONS



# DATASHEET

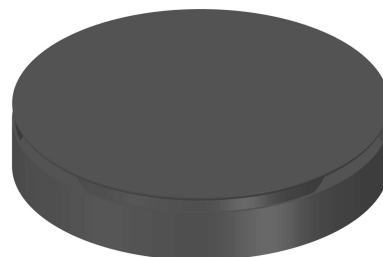
## RECOMENDED CANOPY



Download

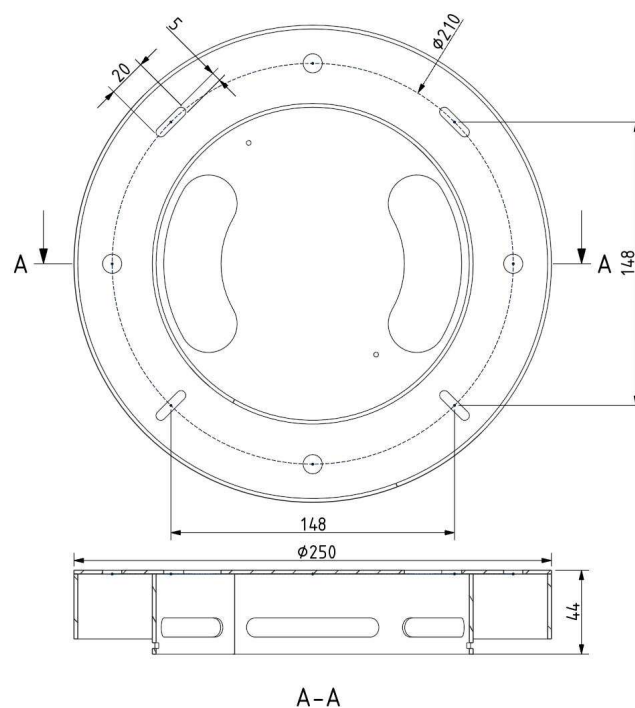
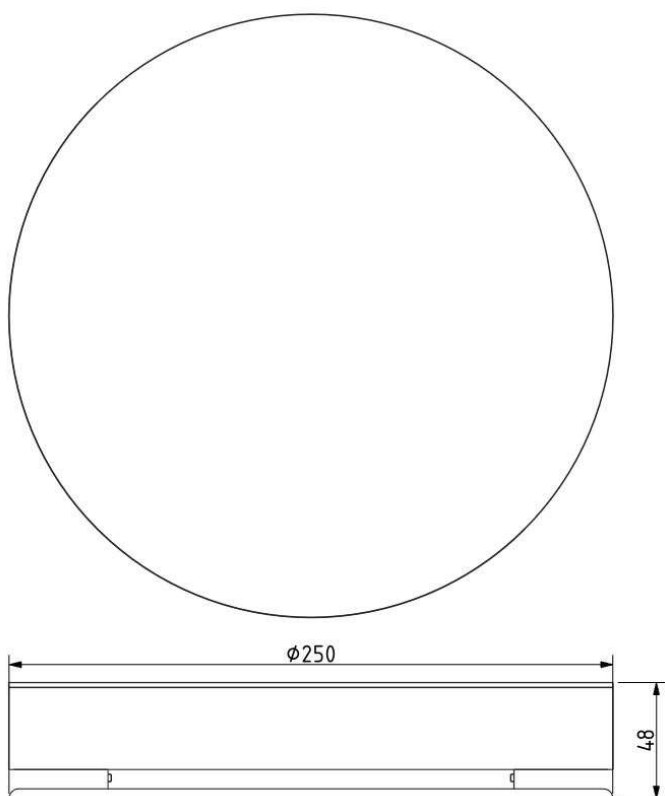
### CEILING CANOPY

Dimensions O x w [mm] 250 x 48 mm  
Weight [kg] 3  
Material metal



### Drawing

### Canopy bracket



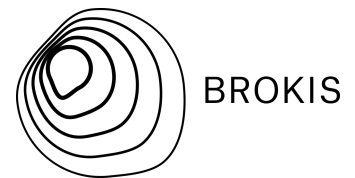
BROKIS S.R.O.  
ŠPANILOVA 1315/25  
163 00 PRAHA 6 - ŘEPY  
CZECH REPUBLIC

ORG ID 64940799  
VAT ID CZ64940799  
C 42174 MĚSTSKÝ SOUD  
V PRAZE

TEL +420 567 211 517  
TECHNICAL@BROKIS.CZ  
INFO@BROKIS.CZ  
WWW.BROKIS.CZ

2020\_11  
PAGE 2

# PRODUCT INFORMATION SHEET



Name PLANETS 3

Type pendent lamp

ID PC1236



## Description

The Planets collection is based on period lights and reflects the daily needs not only of customers but of architects and designers too. Thanks to a simple physical principle, the lights can be variably positioned in diverse arrangements. The use of weights and pulleys makes it possible to quickly adjust the height of the lights, a unique system that allows for several groupings to serve as individual sources of light in an interior, or as multiples of three different (or same) shapes to illuminate larger spaces. The counterweight is precisely calibrated to the specific weight of the light, so adjusting it is safe and easy. A round LED panel and diffusor plate are situated beneath a shade of matte glass, which conceals the internal parts and thus preserves the silhouette of the light. The metal components also come in a matte finish and are combined with a textile cord for a uniform look. The colour scheme is always monochromatic to underline the graphic character of the lights, and the glass shades are rendered in elementary geometric shapes – sphere, cone, and capsule. Planets come in either a white or black finish in combination with smoke grey matte or triplex opal matte glass. The Planets collection stands out with its remarkable versatility, offering a broader dimension in interior lighting with installations ranging from a single light to vast clouds of up to twelve lights.

## Technical description

The techniques Brokis applies in the production of glass are rooted in centuries of tradition and require remarkable skill from master glassmakers. Precision crafting of handblown glass gives each product a distinctive character and unmatched quality. The glass shades are formed from multiple layers of molten glass, each of which is thoroughly scrutinized by the glassmaker before being blown into the mould. The triplex opal glass of the shades represents one of the finest materials used in the lighting industry today. Together with carefully guarded handcraft techniques, the sandwich structure of two transparent outer layers of crystal and an inner layer of white opal between them lends the glass outstanding visual properties. The metal component is manufactured through a unique stamping technique that has been proven over the course of millennia and involves spinning cold sheet metal on a rotating form. The history of this technology dates to Celtic times. As with the glassmakers, the master metalworkers draw upon tradition and experience that have been passed down through the ages and give the final product exceptional added value. The metal fixtures, ceiling canopies, and power cables are available in either white or anthracite grey.

## Glass Colour

smoke grey - transparent glass	A	CGC516
triplex opal	A	CGC39

## Glass surface

acid-etched both side surface	A	CGSU881
-------------------------------	---	---------

## Body finish

metal - black matte powder coating with structure	A	CCS2673
metal - white matte powder coating with structure	A	CCS2809

## Canopy finish

metal - black matte powder coating with structure	A	CCSC2674
metal - white matte powder coating with structure	A	CCSC2810

## Cable colour

textile cable - black	A	CECL519
textile cable - white	A	CECL521

## LED Source

DIM, 24V, LED, 19.7W, 2700K, 2147lm, RA90+	A	LEDS2868
DIM (TW), 24V, LED, 19.7W, 2700K-6500K, 2147lm-2304lm, RA90+	A	LEDS2946

## **Dimmable version**

non-dimmable version	A	CEDV1457
DIM RF system - remote control version	A	CEDV1461
DIM 1-10V	A	CEDV1460
DIM DALI version	A	CEDV1458
DIM AC phase-cut	A	CEDV1730
DIM CASAMBI CBU-PWM4	A	CEDV2854
DIM (TW) CASAMBI CBU-PWM4	A	CEDV2942
DIM (TW) DALI version	A	CEDV2944