

DATASHEET

Type: **TROTTOLA**
Name: Pendant light
ID: PC1322
Designed by: Federico Peri



Download

Description

Trottola is a new collection of suspension and table lights whose shape elicits memories of a popular childhood toy – the spinning top. The aesthetics of the design are carried on an enchanting luminance that passes through an opal diffusor and opaline glass to reveal a playful contrast of shadows and light.

Tech. description

The pendant comprises a dural fixture with LED module, a fixture cover, and a glass shade attached to the fixture with three set screws. The pendant is hung from a wire rope anchored within a ceiling canopy, which also houses the electronics. There is a simple mechanism in the upper part of the fixture for levelling the light after installation.

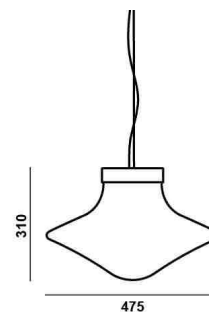


Colours options: https://brokis.sharepoint.com/:b:/s/brokis_sp/EcyO5aCozGZLs6fxTKsMRnABwOpyc8sWjnKUd4O1YsLKrg

CONSTRUCTION SPECIFICATION

Weight: 7.5 kg
Construction material: glass, metal
Cord length [mm]: 2,200 mm
Mounting: Ceiling
Environment: Indoor

DIMENSIONS [mm]



ELECTRICAL SPECIFICATION

Input voltage [V]: 100 - 240 V
Frequency [Hz]: 50-60 Hz
Max. power [W]: 12 W
Coverage IP: 20
Socket: LED module
Light source: -
Energy class: E

CERTIFICATIONS

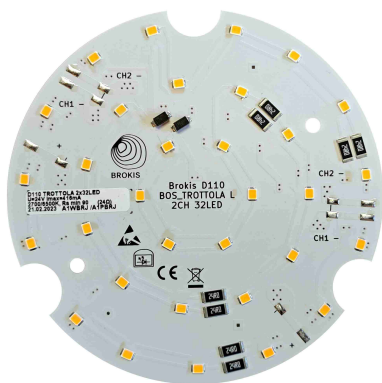


BROKIS S.R.O.
ŠPANILOVA 1315/25
163 00 PRAHA 6 - ŘEPY
CZECH REPUBLIC

ORG ID 64940799
VAT ID CZ64940799
C 42174 MĚSTSKÝ SOUD
V PRAZE

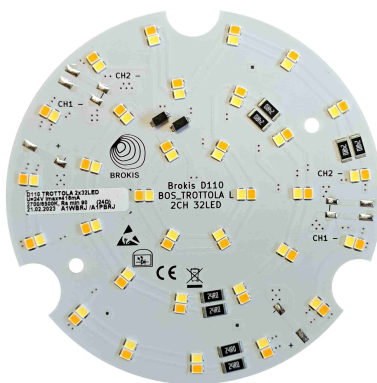
TEL +420 567 211 517
TECHNICAL@BROKIS.CZ
INFO@BROKIS.CZ
WWW.BROKIS.CZ

2023_03
PAGE 1



CM16710

Type	LED module
Lamp wattage [W]	10 W
Input voltage [V]	24 VDC
Energy class	E
Flux [lm]	1260 lm
Light colour [K]	2700 K
CRI	90+
Dimmable	yes



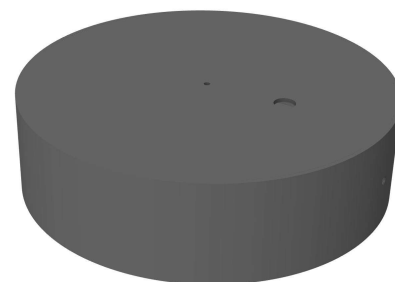
CM16586

Type	LED module
Lamp wattage [W]	10 W
Input voltage [V]	24 VDC
Energy class	E
Flux [lm]	1260-1350 lm
Light colour [K]	2700-6500 K
CRI	90+
Dimmable	yes - tunable white



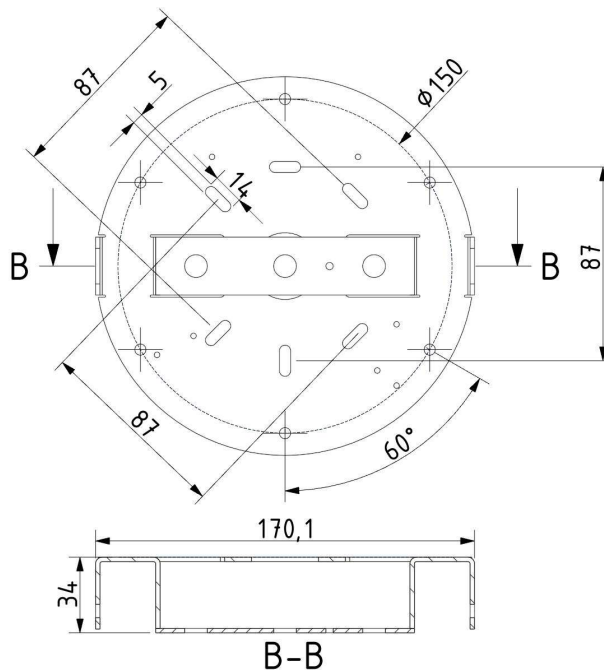
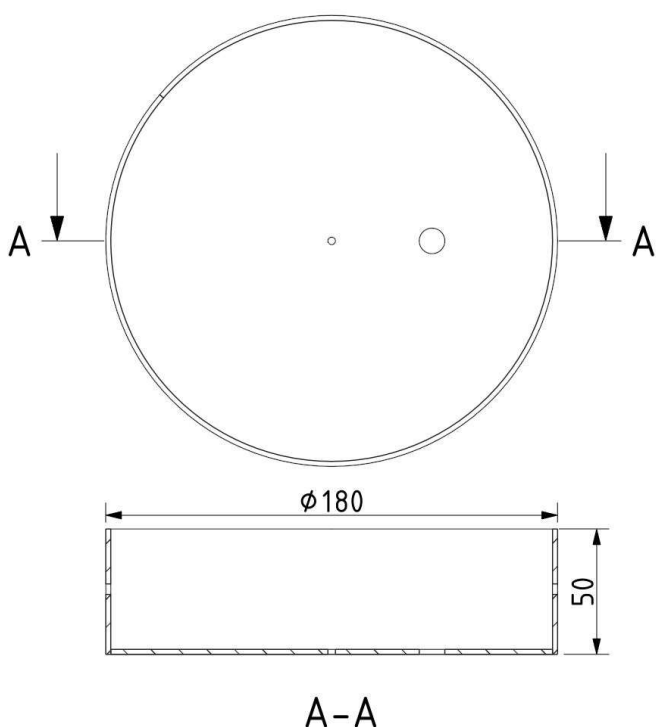
INNER FIXTURE

Dimensions O x w [mm] 180 x 50 mm
Weight [kg] 1.3 kg
Material metal

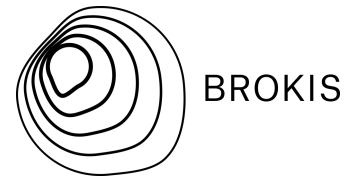


Drawing

Hole placement



PRODUCT INFORMATION SHEET



Name	TROTTOLA pendant L
Type	pendent lamp
ID	PC1322



Description

Trottola is a new collection of suspension and table lights whose shape elicits memories of a popular childhood toy – the spinning top. The aesthetics of the design are carried on an enchanting luminance that passes through an opal diffuser and opaline glass to reveal a playful contrast of shadows and light. The LED source is housed in a base clad in pressed aluminium, which in turn is finished in an attractive black or silver anodized. Brightness and light temperature can be adjusted with a simple turn of the elegant dimmer by the table versions of the collection. Trottola offers two sizes of suspension and table lights in handblown opaline glass. The table variant is fitted with the innovative BROKIS connector, which makes it easy to disconnect the light and move it about the interior and also facilitates disassembly for maintenance and cleaning. As if by magic, the semi-transparent object comes to life with a gentle glow to reveal a fascinating playscape of shapes and shadows in the interior.

Technical description

The technologies used in production are based on several centuries of tradition and artisanal evolution. The precision crafting of handblown glass instils distinctive, enduring character and outstanding quality in all BROKIS products. The glass shades are formed from multiple layers of molten glass, each of which is scrutinized by the master glassmaker prior to being blown into the mould. Up to 70% of the resulting quality is achieved in this stage of production. In the table version, an unique solution called Tunable White allows users to adjust the brightness and colour temperature of the light with a simple turn of elegant knobs. The table version is also fitted with a special connector developed by BROKIS that allows the light to be easily disconnected and moved from one place to another and also enables disassembly for cleaning and maintenance.

Glass Colour

opaline - transparent glass	A	CGC38
pearl grey - opaline glass	A	CGC1916

Glass surface

glossy surface	A	CGSU66
----------------	---	--------

Body finish

silver anodized	A	CCS1917
black anodized	A	CCS1948

Canopy finish

metal - white matte powder coating with structure	A	CCSC2810
metal - black matte powder coating with structure	A	CCSC2674

Cable colour

textile cable - black	A	CECL519
textile cable - light grey	A	CECL1918

LED Source

DIM, 24V, LED, 10W, 2700K, 1261lm, RA90+	A	LEDS2947
DIM (TW), 24V, LED, 10W, 2700K-6500K, 1261lm-1354lm, RA90+	A	LEDS2948

Dimmable version

non-dimmable version	A	CEDV1457
DIM RF system - remote control version	A	CEDV1461
DIM PWM signal	A	CEDV1459
DIM 1-10V	A	CEDV1460
DIM DALI version	A	CEDV1458
DIM AC phase-cut	A	CEDV1730
DIM CASAMBI CBU-PWM4	A	CEDV2854
DIM (TW) CASAMBI CBU-PWM4	A	CEDV2942
DIM (TW) DALI version	A	CEDV2944