



Description

The Whistle collection is, quite literally, a living reference to the work of glassmakers, as inspiration for the design was taken from the blowpipe, which in Czech is known as a glassmaker's whistle. The lucid body of the piece traces the silhouette of a cone of light, and a distinct spotlight with hand-pressed metal shield constitutes its imaginary heart.



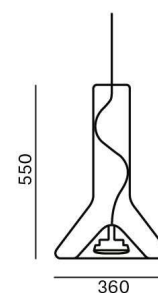
Tech. description The light consists of a glass body with Brokis connector and lead cable with connector. The bottom section comprises a metal reflector with GX53 light source socket. The light includes a metal ceiling canopy.

Colours options: https://brokis.sharepoint.com/:b/s/brokis_sp/ESpcCNBxC91HjdOgAJBG78wBCectsvW1KapIYY-O9T_t0g

CONSTRUCTION SPECIFICATION

| | |
|-------------------------------|--------------|
| Weight: | 4.6 kg |
| Construction material: | glass, metal |
| Cord length [mm]: | 2000 mm |
| Mounting: | Ceiling |
| Environment: | Indoor |

DIMENSIONS [mm]



ELECTRICAL SPECIFICATION

| | |
|---------------------------|-----------------------------------|
| Input voltage [V]: | 230 V |
| Frequency [Hz]: | 50-60 Hz |
| Max. power [W]: | 15 W LED |
| Coverage IP: | 20 |
| Socket: | GX53 |
| Light source: | - |
| Energy class: | A+ to B depending on light source |

CERTIFICATIONS





CM2353

| | |
|------------------------------|---------------|
| Socket | GX53 |
| Type | LED |
| Lamp wattage [W] | 10 W |
| Input voltage [V] | 220 - 240 VAC |
| Energy class | A+ |
| Flux [lm] | 700 lm |
| Light colour [K] | 2700 K |
| CRI | 90+ |
| Lifespan [h] | 25000h |
| Dimmable | yes |
| Dimensions h x w [mm] | 39 x 90 mm |



DATASHEET

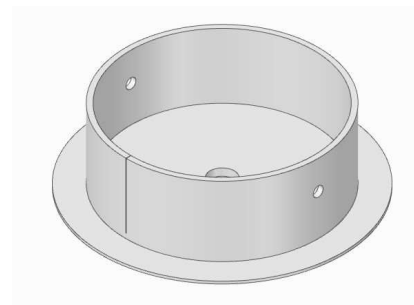
RECOMENDED CANOPY



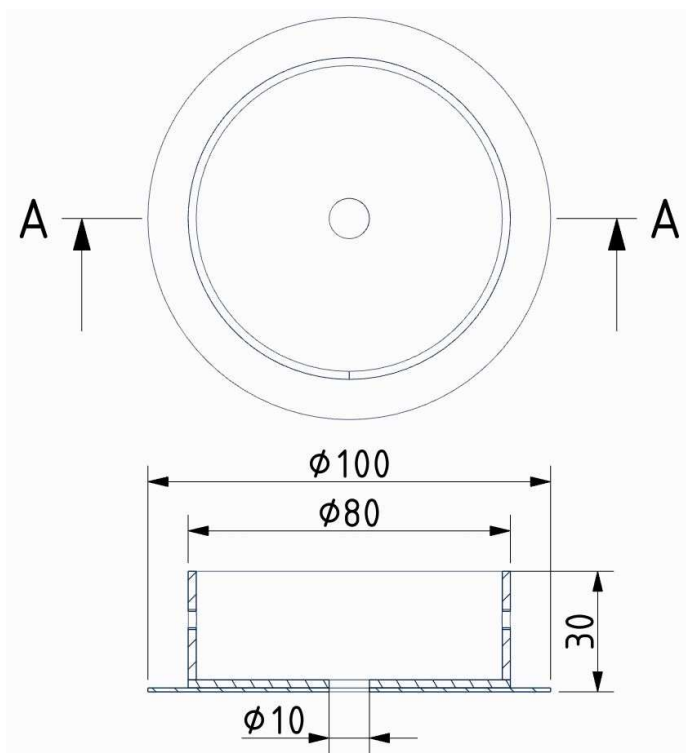
Download

CEILING CANOPY

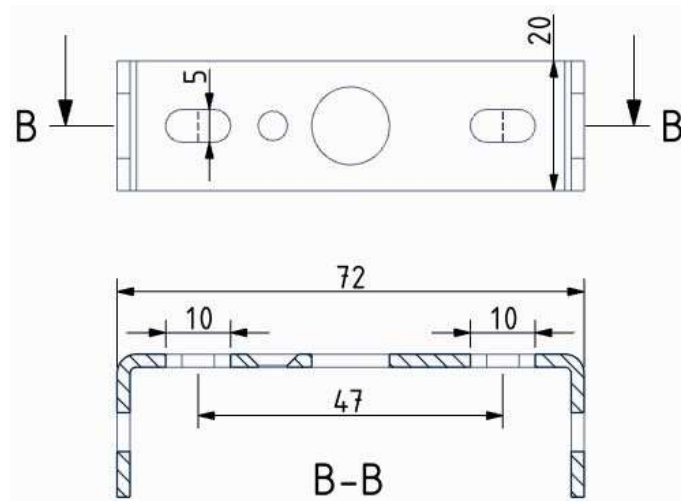
| | |
|-----------------------|-------------|
| Dimensions O x w [mm] | 100 x 30 mm |
| Weight [kg] | 0,25 kg |
| Material | metal |



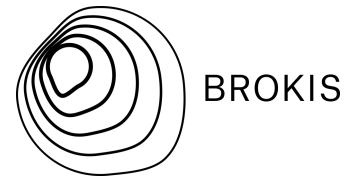
Drawing



Canopy bracket



PRODUCT LIST



Name WHISTLE MEDIUM

Type pendent lamp

ID PC953



Description The Whistle collection is, quite literally, a living reference to the work of glassmakers, as inspiration for the design was taken from the blowpipe, which in Czech is known as a glassmaker's whistle. The lucid body of the piece traces the silhouette of a cone of light, and a distinct spotlight with hand-pressed metal shield constitutes its imaginary heart. The overall shape and the naked cable winding its way up through the body of the light define the character of its simplistic technical form. The collection comprises a suspension light in two sizes as well as a set of three lights. From 2018, Whistle is fitted with special integrated connectors developed by Brokis to facilitate installation and cleaning.

Technical description The craftsmanship applied in production follows in the centuries-old tradition and experience of master glassmakers. The precision crafting of hand-blown glass instills distinctive, enduring character and outstanding quality in all Brokis products. The glass shades are formed from multiple layers of molten glass, each of which is scrutinized by the master glassmaker prior to being blown into the mold. Up to 70% of the resulting quality is achieved in this stage of production. The metal reflector is manufactured through a unique metal stamping technique that has been proven over the course of millennia and involves spinning cold sheet metal on a rotating form. The history of this technology goes back to Celtic times. As with the glassmakers, the master metalworkers draw upon the tradition and experience that have been carefully passed down through the ages and give the final product exceptional added value.

Glass Colour

| | | |
|---------------------------------|---|--------|
| transparent glass | A | CGC23 |
| smoke grey - transparent glass | A | CGC516 |
| smoke brown - transparent glass | A | CGC538 |
| opaline - transparent glass | A | CGC38 |

Glass surface

| | | |
|----------------|-----|--------|
| glossy surface | ALL | CGSU66 |
|----------------|-----|--------|

Body finish

| | | |
|---------|---|--------|
| copper | C | CCS584 |
| brass | C | CCS69 |
| chrome | C | CCS275 |
| black | A | CCS582 |
| white | A | CCS575 |
| grey | A | CCS720 |
| magenta | A | CCS724 |
| menthol | A | CCS723 |

Canopy finish

| | | |
|-------------------------------------|---|---------|
| copper | C | CCSC896 |
| brass | C | CCSC897 |
| chrome | C | CCSC895 |
| iron - black matte powder coating | A | CCSC619 |
| iron - white matte powder coating | A | CCSC618 |
| iron - grey matte powder coating | A | CCSC894 |
| iron - magenta matte powder coating | A | CCSC892 |
| iron - menthol matte powder coating | A | CCSC893 |

Connection method

| | | |
|------------------|---|---------|
| BROKIS connector | A | CCM1019 |
|------------------|---|---------|

Cable colour

| | | |
|----------------------------|---|----------|
| textile cable - black | A | CECL519 |
| textile cable - white | A | CECL521 |
| textile cable - light grey | A | CECL1918 |
| textile cable - dark grey | A | CECL520 |
| textile cable - magenta | A | CECL726 |
| textile cable - menthol | A | CECL725 |

Recommended Bulbs

| | | |
|--|---|--------|
| 230V, GX53, 10W, 2700K, 700lm, RA90, 100°, DIM | A | CEB717 |
|--|---|--------|